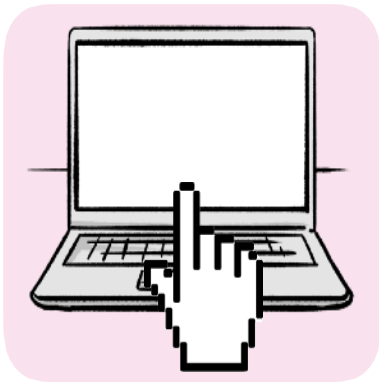


# Why don't people in Northamptonshire get involved in Health and Social Care Research?

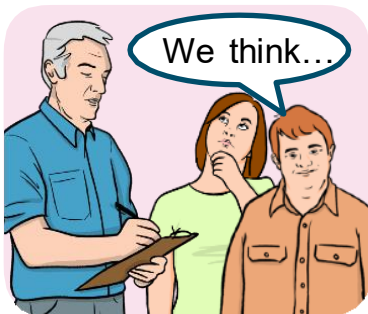




Some words are pink and underlined.

These are links that will go to another website which has more information.

## About us



We listen to what people think about health and care services.



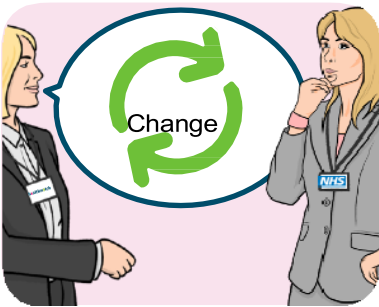
We listen to everyone, especially to people who find it difficult to be heard.



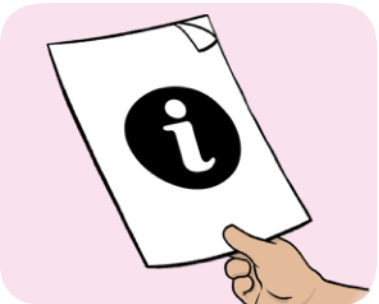
We think about what people say and work out how health and care services should change and get better.



We tell managers of health and care services: What people think about their services.



What changes they should make so their services get better.

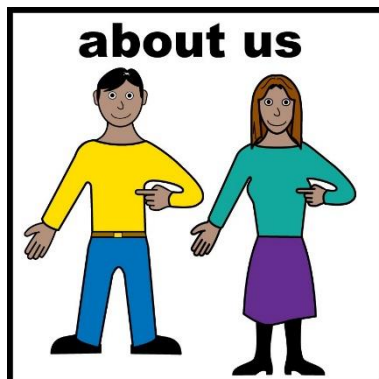


We give people advice and information about health and care services.

# The Project

## Integrated Care Northamptonshire

---



Integrated Care Northamptonshire (ICN) got money from NHS England to find out why people don't take part in health and social care research.

[Home | Integrated Care Northamptonshire](#)  
([icnorthamptonshire.org.uk](http://icnorthamptonshire.org.uk))

They asked Healthwatch North and West Northamptonshire (HWNW) to help them do this. [Contact us | Healthwatch Northamptonshire](#)



They wanted to find out what could be changed so that people take part in their research.



Healthwatch had an online survey.



Healthwatch went to Bewicked coffee shops.



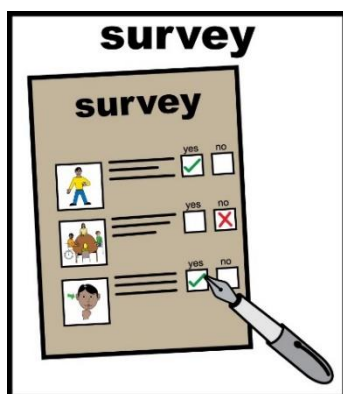
Healthwatch went to the University of Northampton.



Substance Misuse Programme

Healthwatch also worked with The Hope Centre and Bridge to get the views of lots of different people.

- [Homelessness, Hunger, Hardship Support | Northampton Hope Centre](#)
- [Bridge Substance Misuse Home Page \(bridge-northants.org.uk\)](#)



A survey was written that anyone over the age of 11 could fill in.



139 people filled in the survey and 12 people joined 2 focus groups to chat about their thoughts

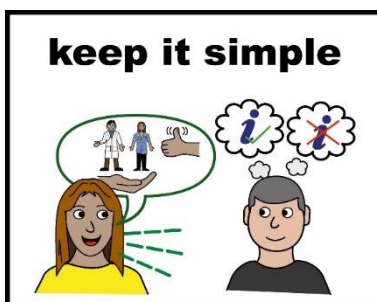


A report was written of what people told Healthwatch.

There were 3 recommendations Healthwatch made:



1.Improve the use of social media, for example, Facebook, to give better information on how to get involved



2.Make sure the aims of the research are clear and understandable



3.Work with community groups to encourage more involvement



What people said:



“Am I just making someone else look like they are good at their job?”



“It should take the time it takes. If it says 1 minute, it should take 1 minute.”



“If it was paid or it was something that I was well informed of and passionate about.”



“A voucher or some incentive always helps with the way everyone is struggling.”

What Integrated Care Northamptonshire said:



Your feedback is very important to tell us how to talk and work with different people.



Your views will support the ICN to improve services.



Your views will help us understand how we involve everyone in research and improve services.



Your views will help us deliver better training.



A 'Big Thank You' to everyone who took part and made this report possible:

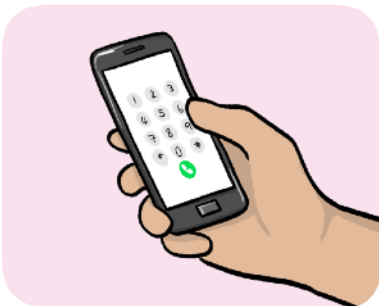
- Integrated Care Northamptonshire
  - University of Northampton
    - Bewiched Coffee
      - Bridge
  - The Hope Centre

For more information:



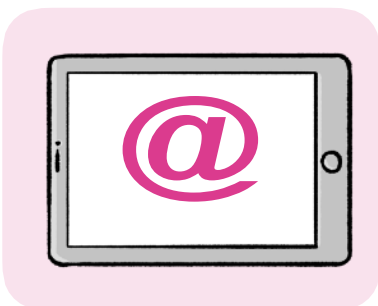
You can look at our website here:

[Healthwatch  
Northamptonshire](http://HealthwatchNorthamptonshire)



If you need more information, please contact us by:

Phone: 0300 002 0010



Email:

[enquiries@healthwatchnor  
thamptonshire.co.uk](mailto:enquiries@healthwatchnorthamptonshire.co.uk)